

**CULTURAL
TYPES
OF
REINDEER
HERDING**

LAPPS

SAMOEDS

**CHUKCHI-
KORIAKS**

TUNGUS

SAIAN

**Pasture area is
within one
landscape zone**

Tundra

Forest-tundra

Taiga

**Seaside plains,
mostly in islands
and peninsulas**

**Mountains in
tundra**

**Plains and
lowlands**

**Uplands and
mountains**

**Lowland taiga
with woodless
wetlands**

**Upland and
mountain taiga**

**Pasture area includes
several landscape
zones**

**Migrations from
North to South
(Tundra – Forest-tundra –
Taiga)**

**Up and down
migrations in
mountains**

Samies in Kola
Peninsula

Khanty and Komi-
Izhemtsy in Ural area

Nenets and Komi-
Izhemtsy in European
North and Western
Siberia

Yakuts in North-West
of Yakutia

Dolgans, Evens,
Iukagirs, and Chukchi
in Yakutia

Evens and Yakuts in
North-East of Yakutia

**REINDEER
ECONOMY**

**State
managed**

**Family
based**

**Meat
productive**
(in tundra)

**Subsistence
and transport
herding with
fur animal
hunting**
(in taiga)

**Meat
productive**
(in tundra)

**Subsistence
and transport
herding with
fur animal
hunting**
(in taiga)

Reduced and
restored
*(Chukchies,
Koriaks,
Evens,
Samies, etc.)*

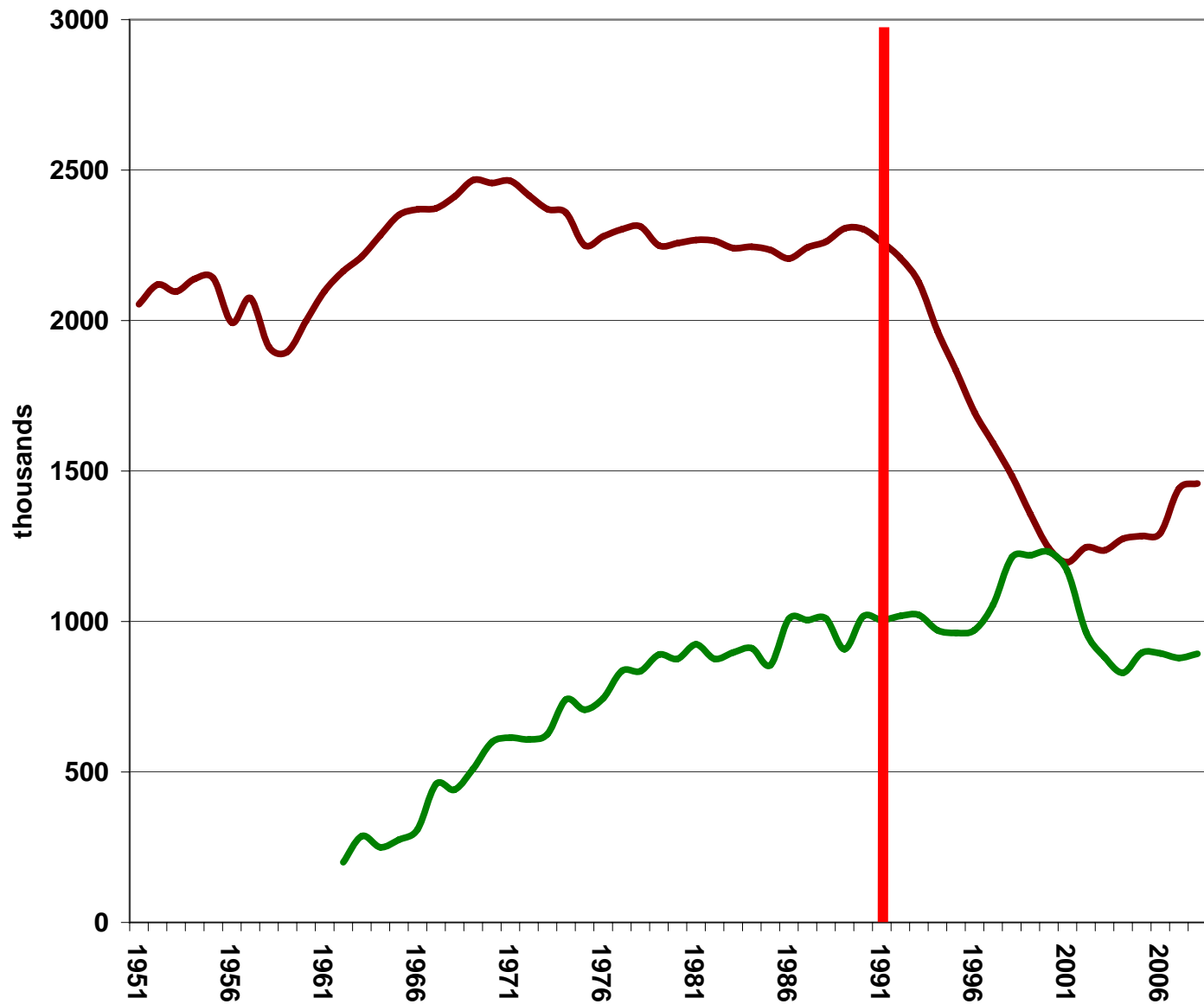
Reduced
without
restoring
*(Evensks and
Evens)*

Increased
*(Nenets and
Komi-
Izhemtsy)*

Remained
stable
*(Evensks,
Evens, etc.)*

NUMBER OF DOMESTICATED AND WILD REINDEER IN RUSSIA

1991 - COLLAPSE OF USSR

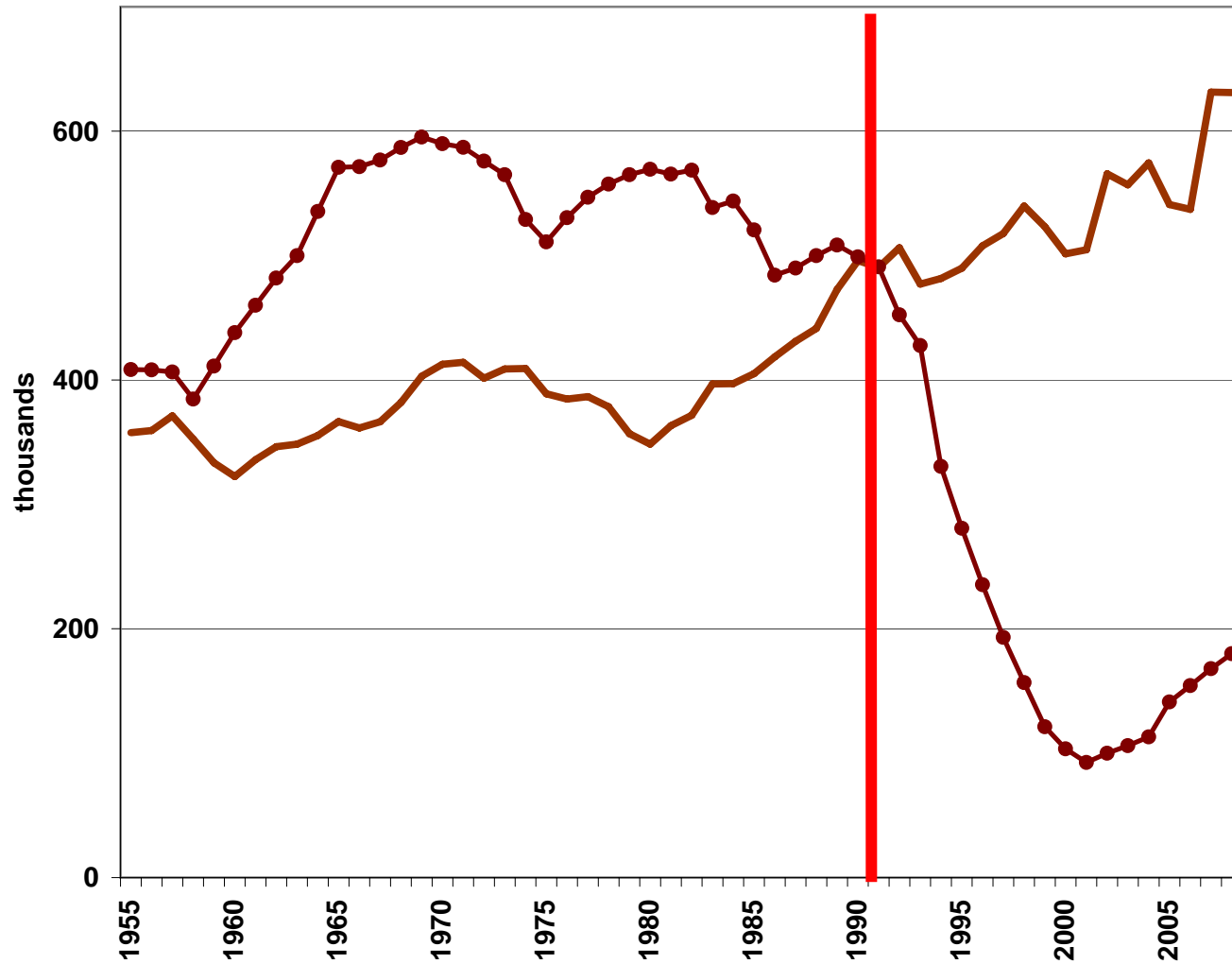


DOMESTICATED REINDEER

WILD REINDEER

NUMBER OF DOMESTICATED REINDEER IN YAMAL-NENETS OKRUG AND CHUKOTKA

1991 - COLLAPSE OF USSR

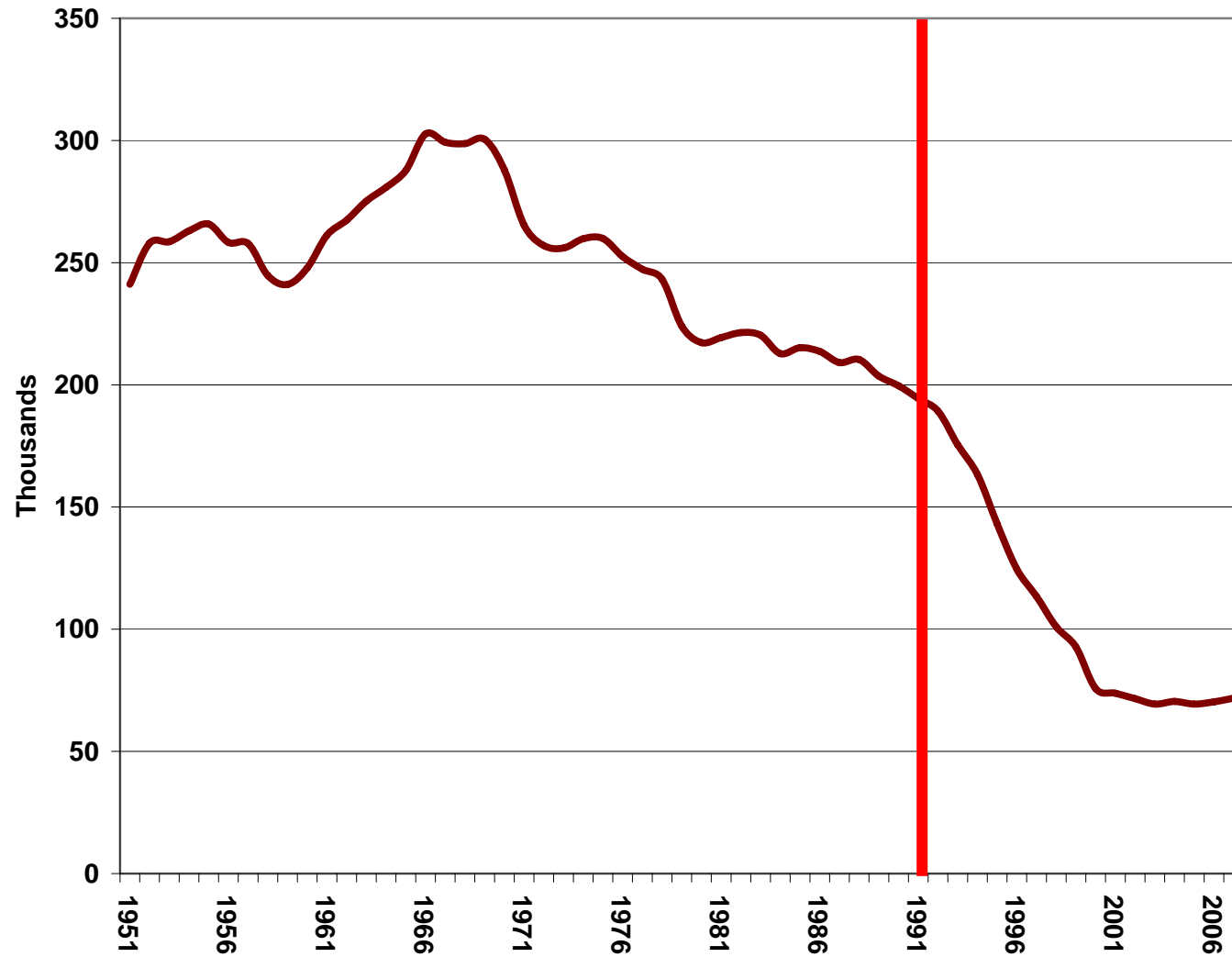


— YAMAL-NENETS OKRUG

● CHUKOTKA

NUMBER OF DOMESTICATED REINDEER IN TAIGA REGIONS

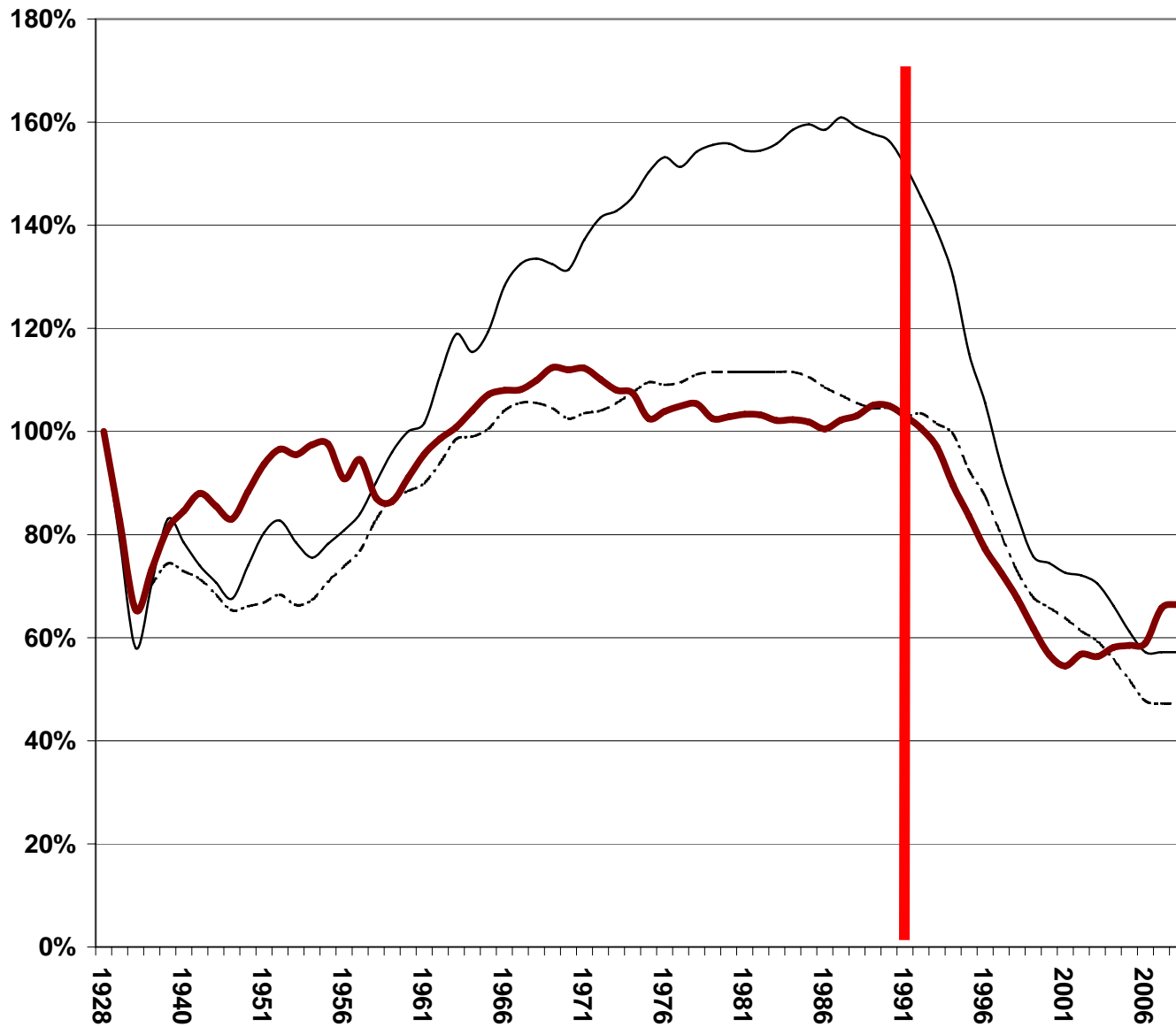
1991 - COLLAPSE OF USSR



COMPARATIVE DYUNAMICS OF DOMESTICATED REINDEER AND CATTLE NUMBER IN RUSSIA

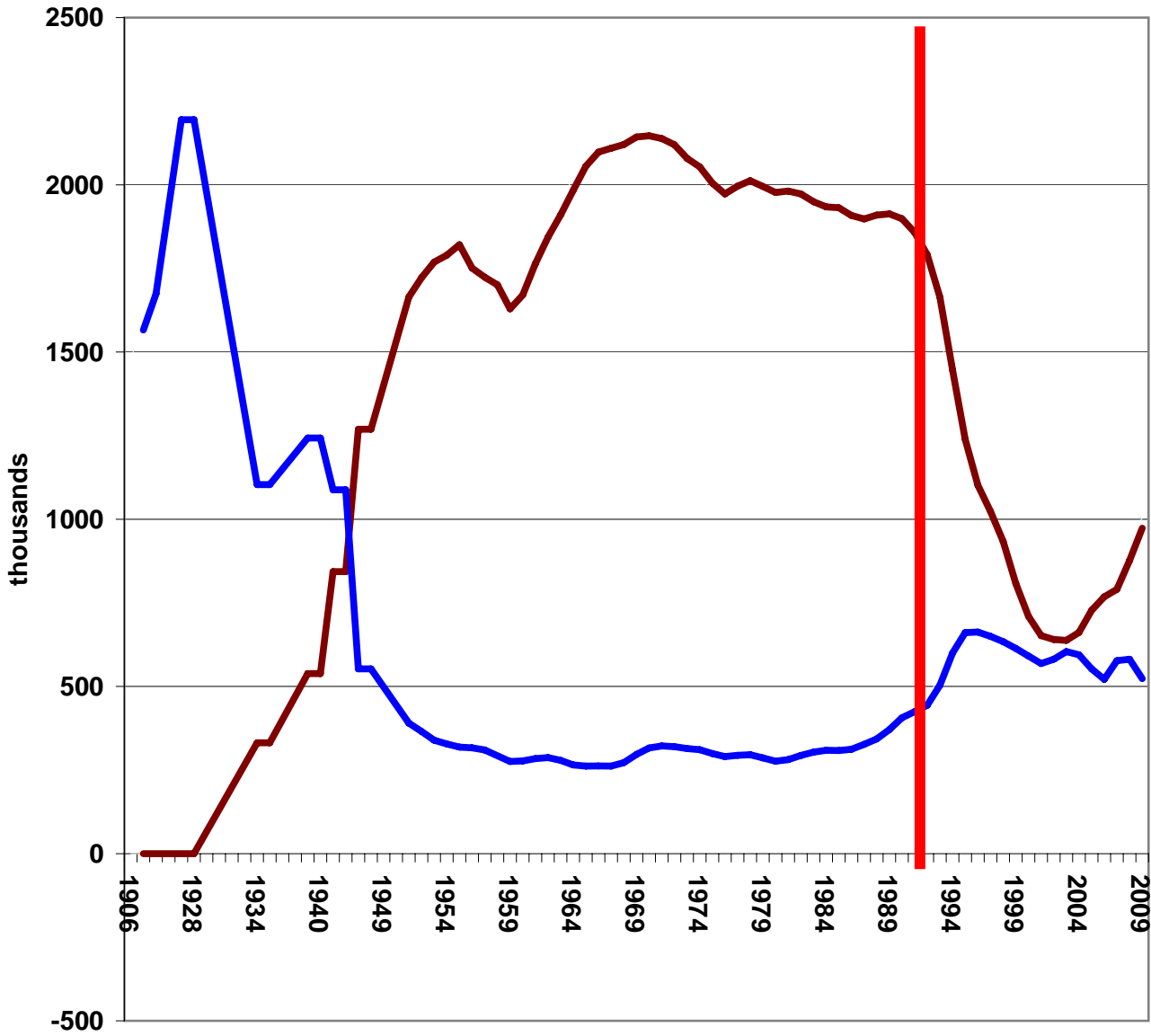
1991 - COLLAPS OF USSR

- Cattle (1928 - 100%)
- - - incl. cows
- Reindeer (1927 - 100%)



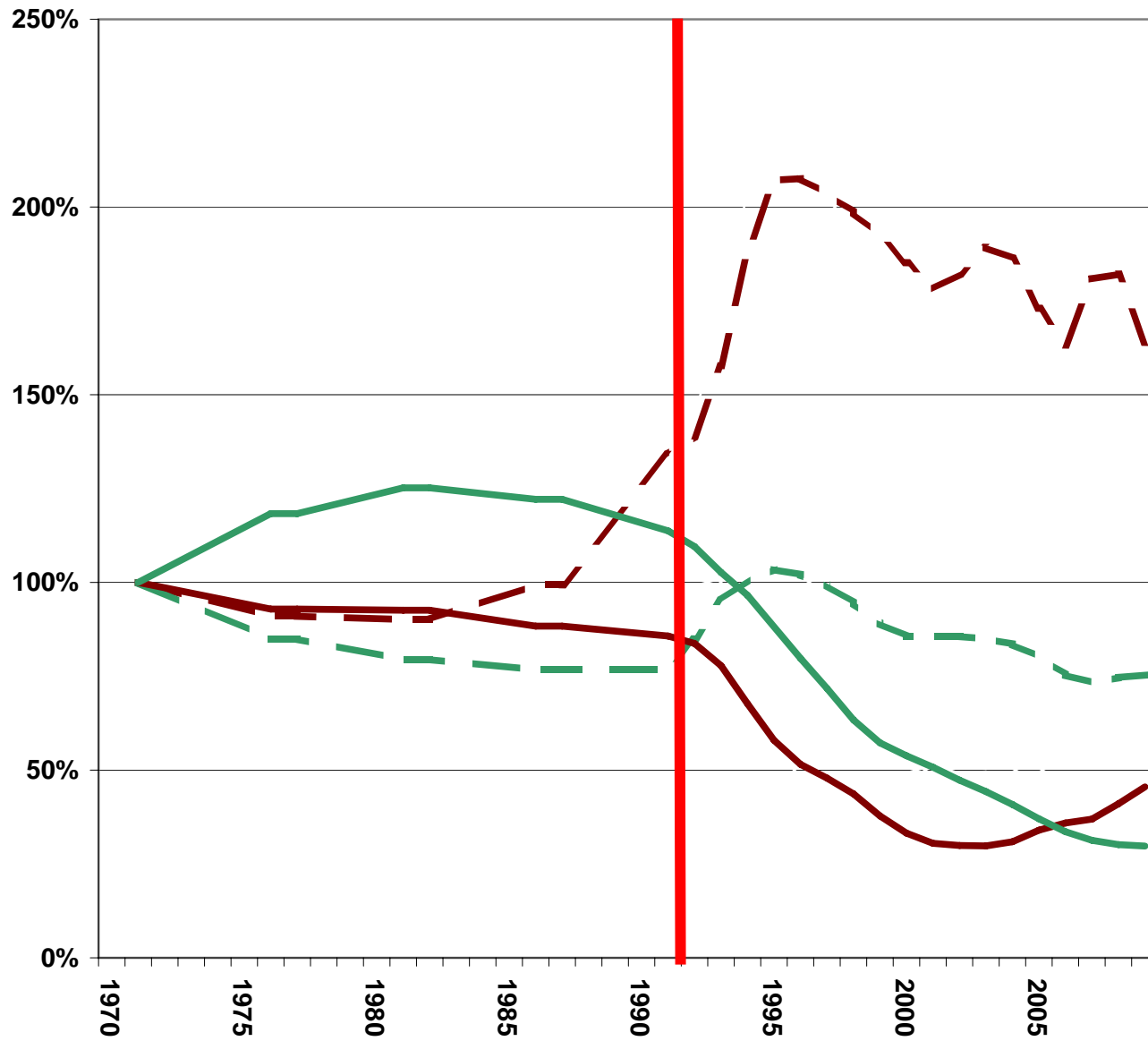
**COMPARATIVE
DYNAMICS
OF
DOMESTICATED REINDEER
NUMBER
IN DIFFERENT FORMS
OF OWNERSHIP
IN RUSSIA**

1991 - COLLAPSE OF USSR



— REINDEER IN ENTERPRISES
— REINDEER IN HOUSEHOLDS

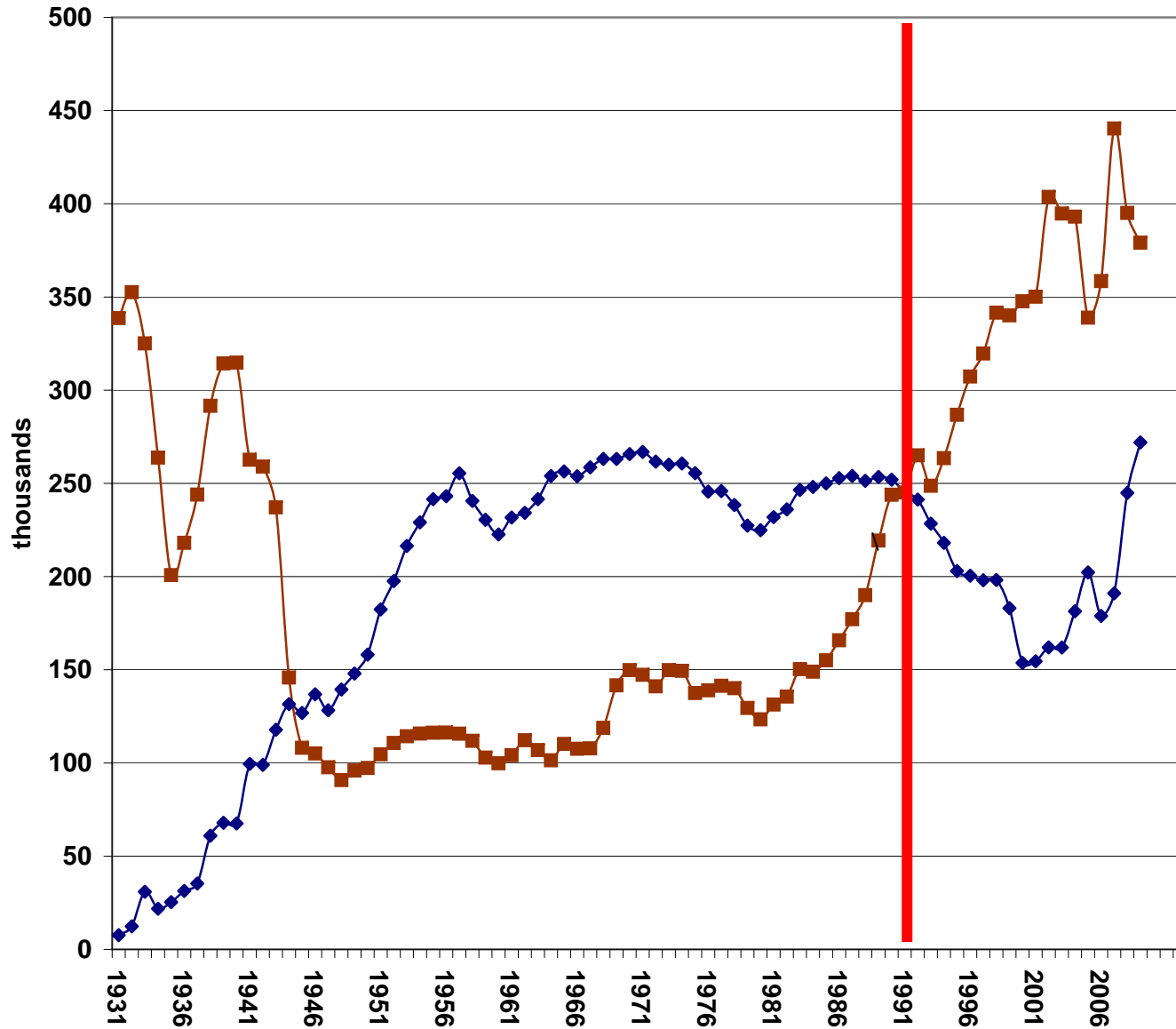
**NUMBER OF
REINDEER AND COWS
IN RUSSIA
1970 = 100%**



- REINDEER IN HOUSEHOLDS
- COWS IN HOUSEHOLDS
- REINDEER IN ENTERPRISES
- COWS IN ENTERPRISES

NUMBER OF DOMESTICATED REINDEER IN YAMAL-NENETS OKRUG

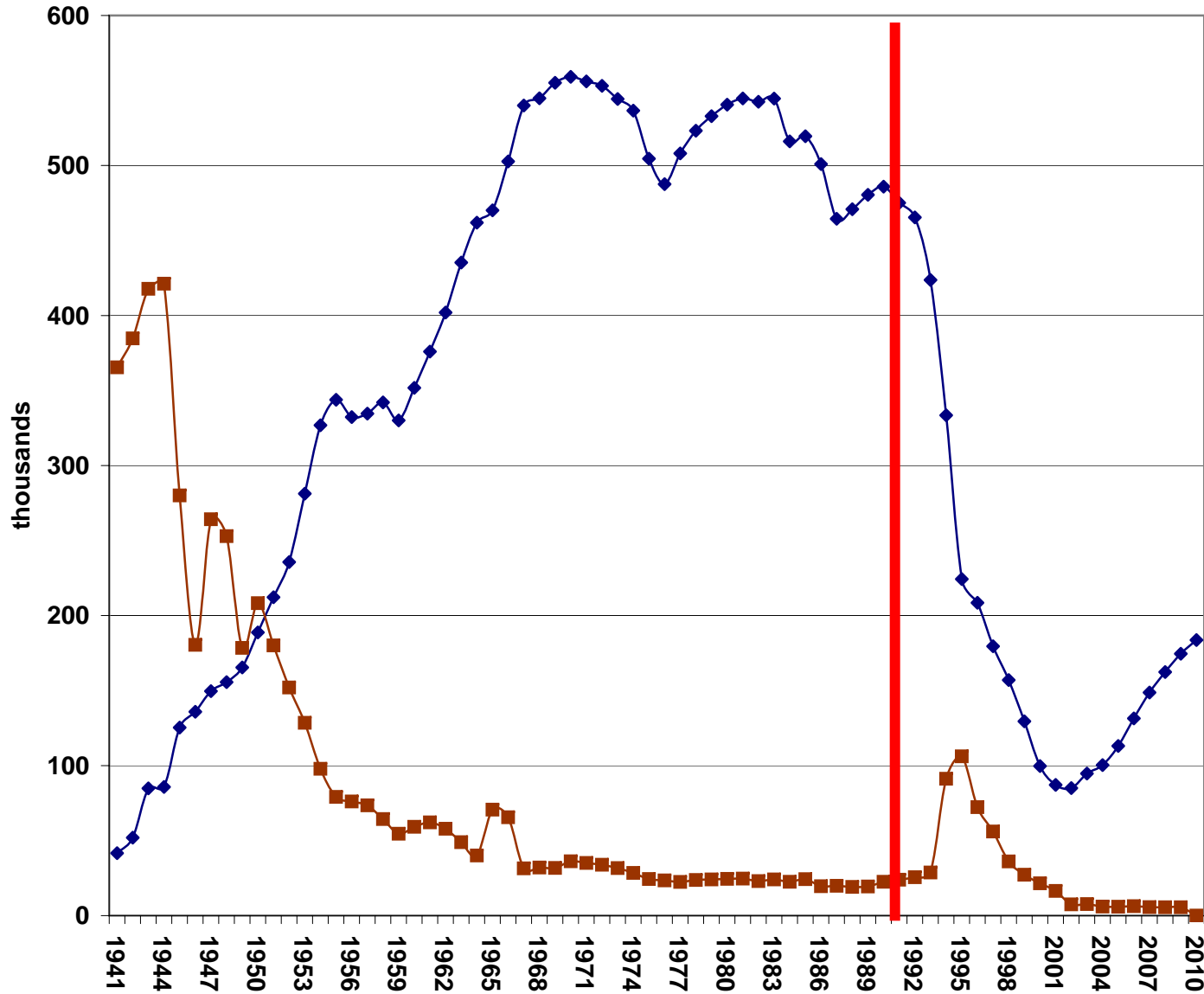
1991 - COLLAPSE OF USSR



◆ REINDEER IN ENTERPRISES
■ REINDEER IN HOUSEHOLDS

NUMBER OF DOMESTICATED REINDEER IN CHUKOTKA

1991 - COLLAPSE OF USSR

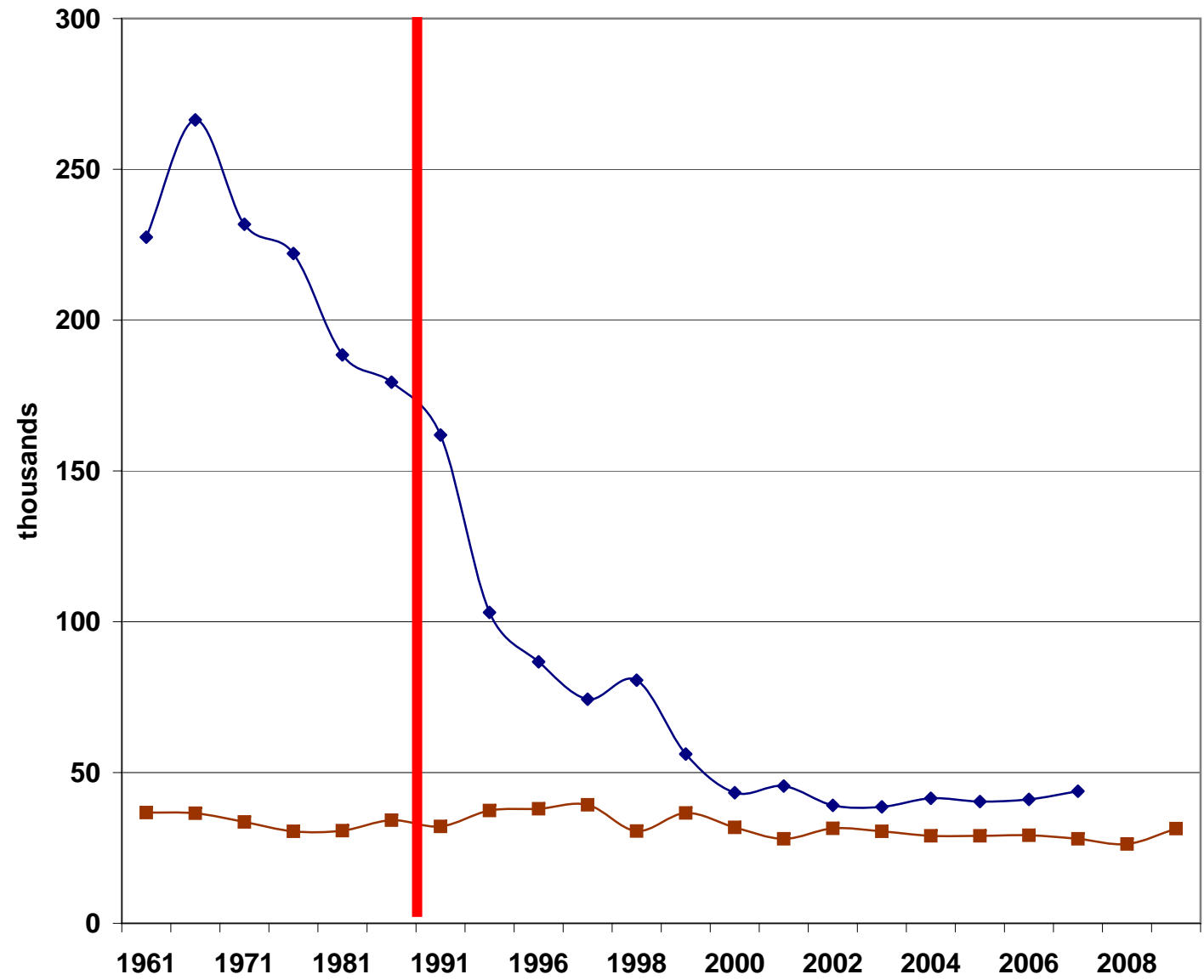


◆ REINDEER IN ENTERPRISES

■ REINDEER IN HOUSEHOLDS

NUMBER OF DOMESTICATED REINDEER IN TAIGA REGIONS

1991 - COLLAPS OF USSR



◆ REINDEER IN ENTERPRISES
■ REINDEER IN HOUSEHOLDS